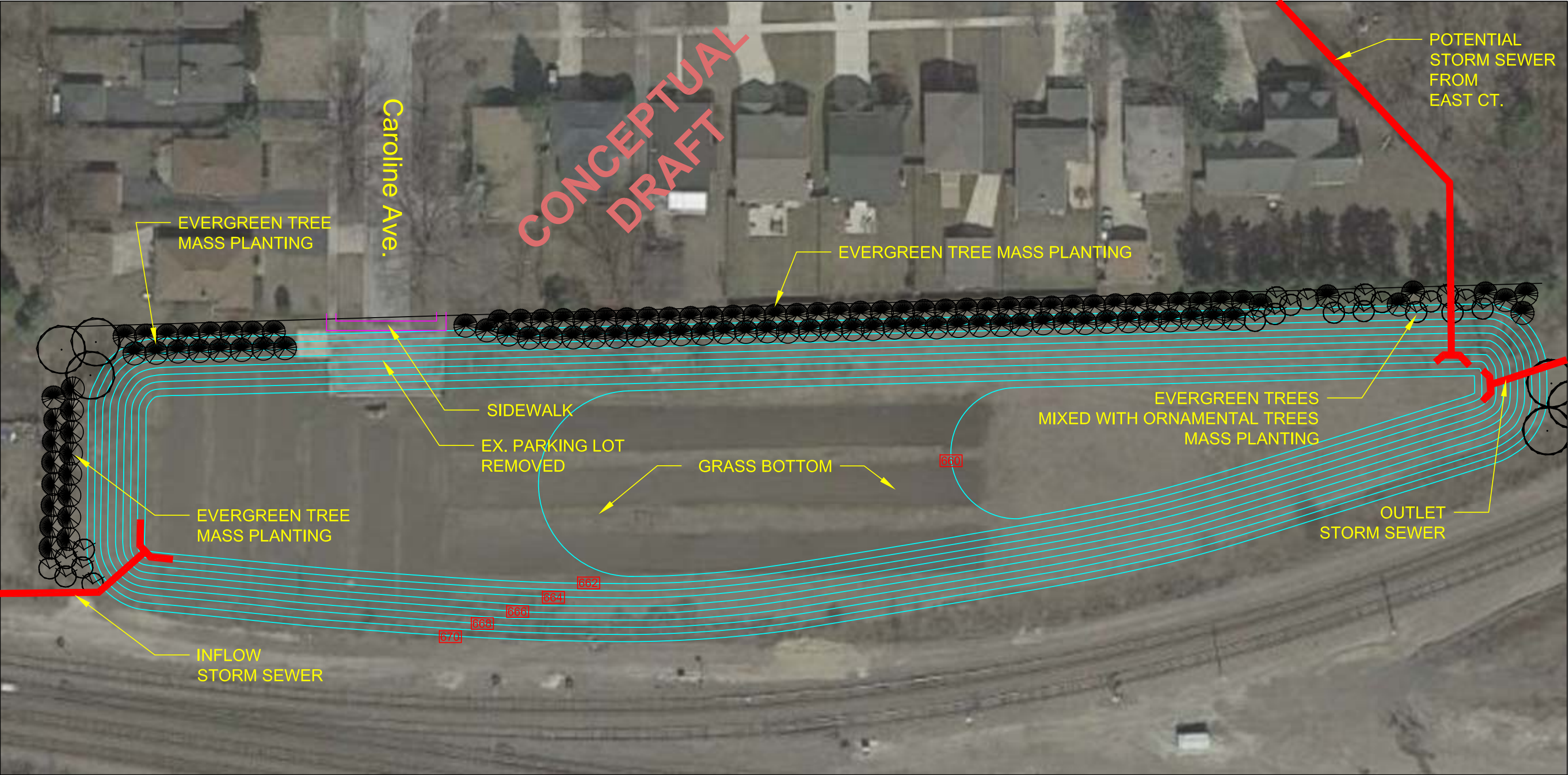


FLOOD STORAGE CREATED = 14 ACRE FEET



GOLDEN MEADOWS PARK SITE DEVELOPMENT PLAN

PROPOSED CONTOUR
Y PROPOSED STORM SEWER
 NORTH

CHRISTOPHER B. BURKE ENGINEERING, LTD.
 9575 W. Higgins Road, Suite 600
 Rosemont, Illinois 60018
 (847) 823-0500

CLIENT:
CITY OF ELMHURST

NO.	DATE	NATURE OF REVISION	CHKD.	MODEL:
FILE NAME		N:\ELMHURST\140410\Landscaping		

TITLE:
**GOLDEN MEADOWS PARK
 PROPOSED DEVELOPMENT**

PROJ. NO. 140410
 DATE: 12/15/14
 SHEET OF
EXH-1